

Legacy Print Samples

VALENTINE DIGITAL



Shady Brook

All dimensions and details are approximate and subject to construction or other conditions. Construction and landscaping drawings are artist's concept for illustrative purposes and may show optional features. All plans are the exclusive property of Orndorff, LLC and may not be copied or used without written consent.

Shady Brook Premier Real Estate Offer

Sales Collateral

12" X 9", Sales Kit/folder/insert



Competition
interior and
exterior of
this house
is Orndorff, LLC.



Manufactured and
architectural design
the classic design of this house.



A great setting must be
added to this setting to
provide a comfortable
living for everyone.



Shady Brook

In the interest of continuous improvements and to meet changing market conditions, the Orndorff, LLC reserves the right to modify specifications and features without notice or obligation. Please consult sales representative for more information.

Legacy Print Samples

Inside

Introducing Shady Brook 1150 Youngsford Road, Gladwyne, PA 19035

A custom country estate home with magnificent views, inside and out

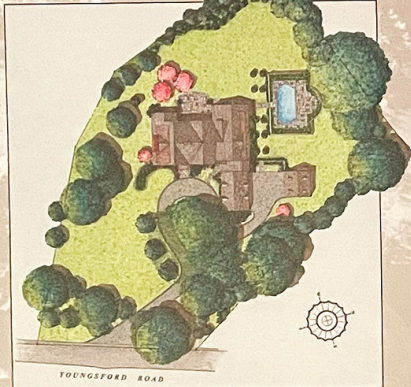
Introducing the final home in the series of only 200 Shady Brook homes. This home is a true masterpiece of custom country living. It is a home that is truly a masterpiece of custom country living. It is a home that is truly a masterpiece of custom country living.

Introducing the final home in the series of only 200 Shady Brook homes. This home is a true masterpiece of custom country living. It is a home that is truly a masterpiece of custom country living. It is a home that is truly a masterpiece of custom country living.

Introducing the final home in the series of only 200 Shady Brook homes. This home is a true masterpiece of custom country living. It is a home that is truly a masterpiece of custom country living. It is a home that is truly a masterpiece of custom country living.

Introducing the final home in the series of only 200 Shady Brook homes. This home is a true masterpiece of custom country living. It is a home that is truly a masterpiece of custom country living. It is a home that is truly a masterpiece of custom country living.

Introducing the final home in the series of only 200 Shady Brook homes. This home is a true masterpiece of custom country living. It is a home that is truly a masterpiece of custom country living. It is a home that is truly a masterpiece of custom country living.

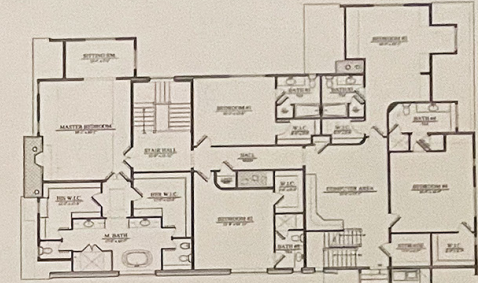


Youngsford Road

Prudential Fox & Roach REALTORS



Joanne S. Kauffman
116 Conestoga Lane Suite 100
Gladwyne, PA 19035
610-664-5055 Direct
610-896-7400 Office

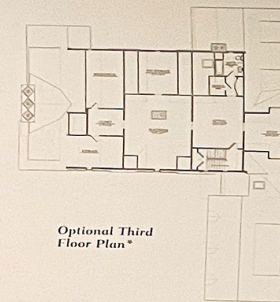


Second Floor Plan*

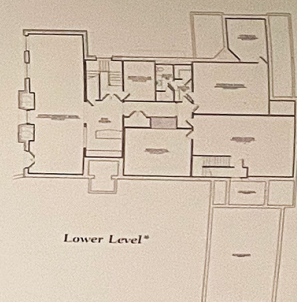
Shady Brook



First Floor Plan*



Optional Third Floor Plan*



Lower Level*

*All dimensions and details are approximate and subject to change. All plans are for informational purposes only. All plans are for informational purposes only. All plans are for informational purposes only.

Legacy Print Samples

VALENTINE DIGITAL



Orchid, LLC

We build homes that fulfill dreams.

Orchid, LLC, builds more than luxurious custom estate homes; they build dreams. Orchid is the benchmark of luxurious custom estate homes in one of the most prestigious addresses in the country. The Main Line. This one-of-a-kind company builds one-of-a-kind homes, the pinnacle of the real estate industry, in the serene and scenic Main Line. Orchid homes are in an elite class of their own.

Each Orchid home boasts its own distinctive, dynamic personality. No two Orchid home buyers are the same, and no two Orchid homes are the same. Each home is designed and constructed with an unwavering commitment to excellence that only an unparalleled degree of artistic talent and technical know-how can bring.

Orchid takes painstaking measures to ensure that every detail of the home exceeds the highest standards—and exceeds the homeowner's expectations. Orchid homes offer the

best of everything: the best designs, the best locations, the best materials, the best craftsmanship. No cutting corners. No taking shortcuts. No settling for second best. Orchid homes are first-class in every aspect.

Orchid knows that building homes is about more than bricks and mortar. It is about families living their dreams and investing in their future. An Orchid home stands the test of time, providing an enduring sense of luxury and quality for generations of families to come.

For families who desire that perfect balance between stately elegance with easy comfort, luxurious style with smart amenities, and private settings with neighborly atmospheres, Orchid puts its reputation behind every home that it builds. In every dream it fulfills. This is the stamp of an Orchid home. Only a few select homes of such caliber exist today. Only a few select homes can be an Orchid home.

Gladwyne, PA 19035

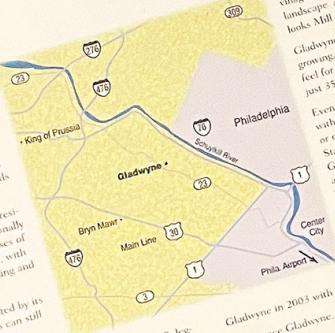
One of the Most Sought-After Addresses in the U.S.

The historic village of Gladwyne provides the finest setting for a luxurious custom home such as Shady Brook. Those who live in Gladwyne can afford to live anywhere in the world; they live in Gladwyne simply because they can.

Originally settled as Merion Square in 1682 and native home of the Leni Lenape Indians, Gladwyne is the first town in Lower Merion, evolved at the intersection of roads now called Youngsford and Hightower Mill, the first two roads built in the town.

Today, Gladwyne remains a quiet country village where residents can walk to a number of fine stores, an internationally renowned restaurant, award-winning schools, and houses of worship. Recreation activities also abound in the area, with spacious parks, spectacular gardens, manicured walking and horse trails, exciting community events, and more.

Gladwyne's contemporary ambience is complemented by its deep historic roots. A rich tapestry of historic sites can be found throughout the village, including the famous Merion Square Hotel, now called the Old Guard House Inn. Situated on a tract of majestic farmland, the inn was built in three stages. Although the Colonial troops stopped at the inn to quench their thirst during the Revolution.



Another historic highlight, Mill Creek still flows through the village, recalling a quiet Colonial time when mills dotted the landscape. Another fabulous Orchard home, Haldale, overlooks Mill Creek, not far from its sibling, Steady Brook.

Gladwyne continues to flourish in modern times, with a growing, vibrant community that still maintains the close-knit feel for which it was known in 1880, when the village had just 55 houses, a few stores and a couple hundred residents.

Even in the 1800s, Gladwyne was ideally located for travel with a stage coach that operated from Gladwyne to Ardmore or on the Philadelphia and Reading Railroad with Rose Glen Station near the banks of the Schuylkill River. Today, Gladwyne provides that same premier location with easy access to vital corporate, industrial and retail centers along The Main Line and King of Prussia. Center City Philadelphia is only 12 miles away.

According to Forbes Magazine, Gladwyne's 19035 zip code has the nation's second-highest average annual family income in the United States. Philadelphia Magazine recently reported a 22% increase in value for homes sold in Gladwyne in 2003 with an increase of 47% in assessed value over a 5-year period.

Experience Gladwyne, the Main Line's most coveted hidden treasure.

Back



Artist's concept for illustration purposes only and may not represent actual site conditions and/or landscaping. Developer and/or builder reserves the right to modify plans. Site plan is not shown to scale.

Prudential

Fox & Roach REALTORS®